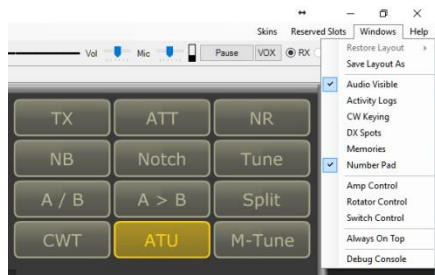
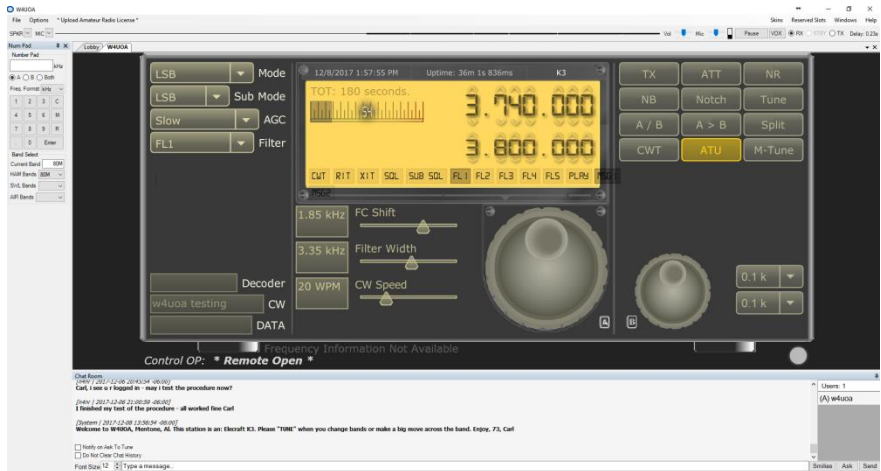


Operating Instructions for W4UOA RCForb Remote

W4UOA RCForb Remote provides access to an Elecraft K3, KPA500 amplifier, KAT500 tuner and two antennas—a 220’ dipole and a full wave loop cut for 3.5 MHz. The RCForb client and information on its history are available at <http://www.remotehams.com>.

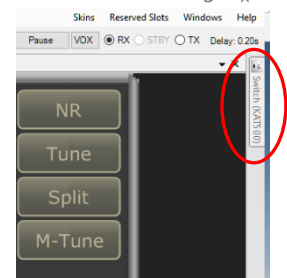
To facilitate the operation of W4UOA RCForb Remote, please configure your client to include the KPA500 Amplifier window and the KAT500 Tuner Window. RCForbs refers to the the KAT500 as Switch. The following paragraphs will walk you through the steps to enable these two windows and how to save your new layout. The image to the right is the default layout and includes the Num Pad window, Audio trace, and the Chat window.



Begin by clicking on the Windows menu option at the top of the RCForb Client screen and then clicking on Switch Control. You will see Switch Control near the bottom of the choices that are displayed when you click on Windows.

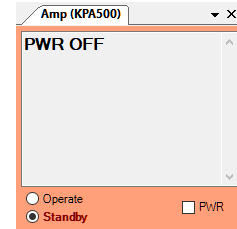
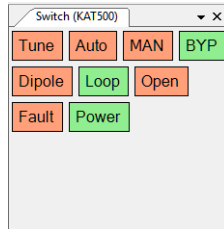
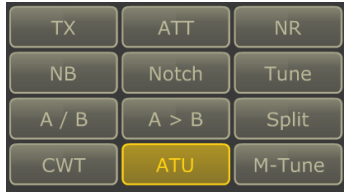
When you click on Switch Control a tab will appear on the right margin of your layout. It is easy to miss so look closely on the right edge near the top of your layout. It will look like the image below right.

Notice the tab circled in red on the image to the right. The window is now in auto hide. Notice also that RCForb’s refers to it as Switch (KAT500). As you will see, this window will give you access to all the Elecraft KAT500 tuner controls. From here on we’ll refer to this window simply as KAT. As you move your mouse over the tab—the full KAT window will appear. However, if you move your mouse off the KAT tab, it will auto hide again. Mouse over the tab again and this time click on the small push pin to the left of the “x” located at the top of the KAT window. When you click on the push pin, the window is *pinned* open and you can then use your mouse elsewhere on the layout without the KAT window closing.



Click on the Windows menu option again and this time click on Amp Control. As before, a tab will appear on the right edge near the top of your layout. Mouse over the Amp (KPA500) tab and then click on the pin as you did earlier with the KAT window. This will pin the AMP window open. To save this layout, click on Windows – Save Layout As and then Save.

The following instructions assume you have configured your layout as just described and that your RCForb layout now includes the AMP and the KAT windows pinned open. Each step outlined below, describes an action to be taken on the K3 button array, in the KAT window, or the AMP window as show immediately below.



Amplifier Operation

Operate W4UOA at High Power

1. K3 ATU OFF
2. AMP PWR ON
3. IF AMP shows Operate change it to Standby
4. IF KAT PWR is OFF turn KAT PWR ON
5. KAT MAN
6. KAT TUNE
7. K3 M-Tune ON – watch FWD & VSWR on AMP*
8. K3 M-Tune OFF
9. AMP Operate

*When a solution has been found FWD will display ~25 watts and VSWR should be close to 1:1.

*Turn off the internal K3 tuner
Powers on the KPA-500
Synchronizes RCForb with the KPA-500
Power on the KAT-500
Put the KAT-500 in Manual Mode
On carrier force KAT-500 to tune
Send 20 watt carrier to KAT-500 to tune
Turn off carrier when solution is reached
Switch to Operate*

Change Antenna When Operating at High Power

10. K3 TX is OFF
11. KAT Dipole (220') or Loop (80M)
12. KAT TUNE
13. K3 M-Tune ON – watch FWD & VSWR on AMP*
14. K3 M-Tune OFF

*When a solution has been found FWD will display ~25 watts and VSWR should be close to 1:1.

*Be in receive mode
Select desired antenna
On carrier force KAT-500 to tune
Send 20 watt carrier to KAT-500 to tune
Turn off carrier when solution is reached*

To Return to K3 100 Watt Operation from Amplifier Operation

1. AMP Standby
2. AMP PWR OFF
3. KAT BYP
4. K3 ATU ON
5. K3 TUNE

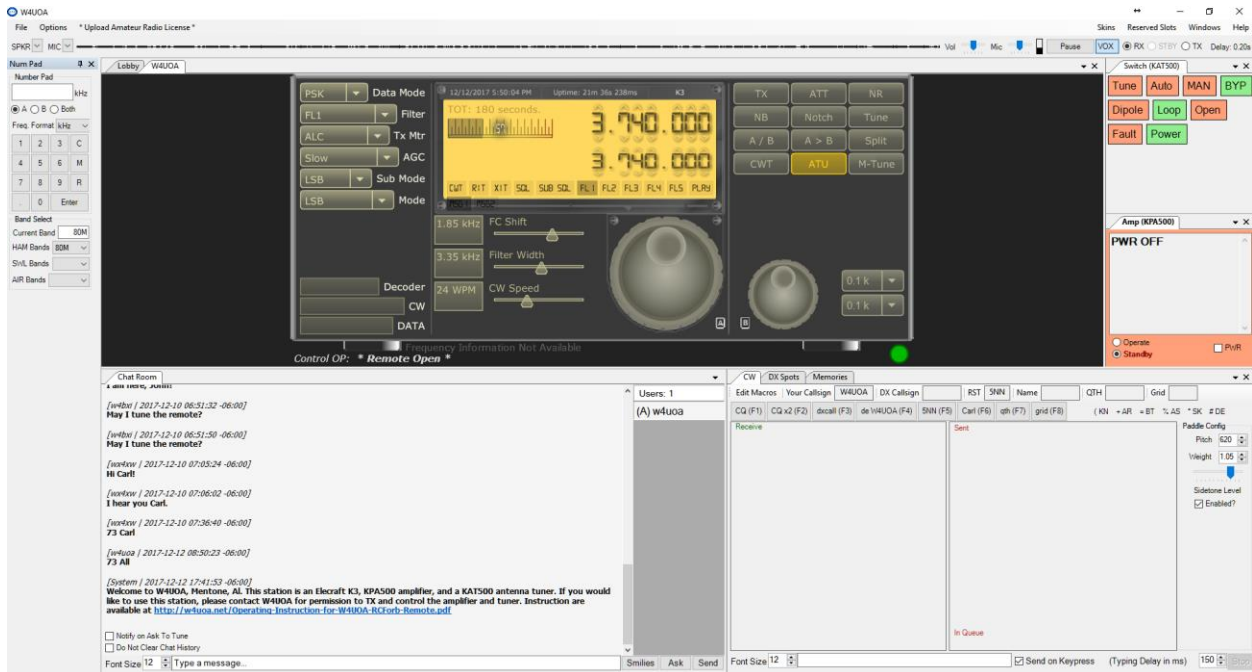
*Put KPA-500 in Standby
Power off the KPA-500
Put the KAT-500 in by-pass mode
Turn on the internal K3 tuner
Seek an internal tuner solution*

To Operate K3 at 100 Watts

1. IF AMP is ON put AMP in Standby
2. AMP PWR OFF
3. Confirm KAT PWR ON
4. KAT BYP
5. K3 ATU ON
6. K3 TUNE

*AMP to standby
AMP power off
KAT power on
KAT in by-pass mode
K3 internal tuner on
Tune whenever changing bands or
large frequency change within band*

The final image below shows a common layout that incorporates the CW window and a somewhat larger Chat window. Please also note that for easy frequency changes, you can directly enter a frequency in KHz in the Number Pad text box on the far left and then hit enter. The K3 will immediately go to frequency you entered. For example, to go to 3.740 MHz, type 3740 in the Number Pad text box and then enter. If you enjoy CW contesting or CW DX, the RCForb does CW quite seamlessly. You can create your own RCForb CW macros or keyboard sending either on Keypress or on Enter. It works very well. You will be impressed.



**Please always leave the station in 100 watt mode; on 3740; LSB.
Thank you! Enjoy!**